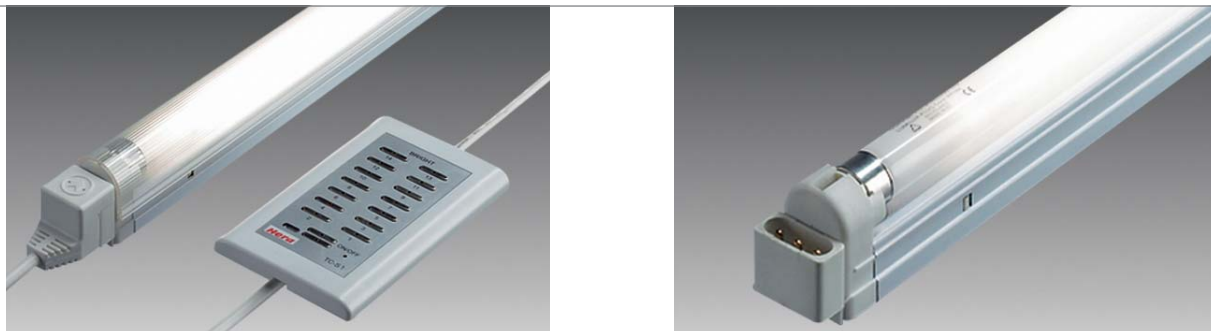
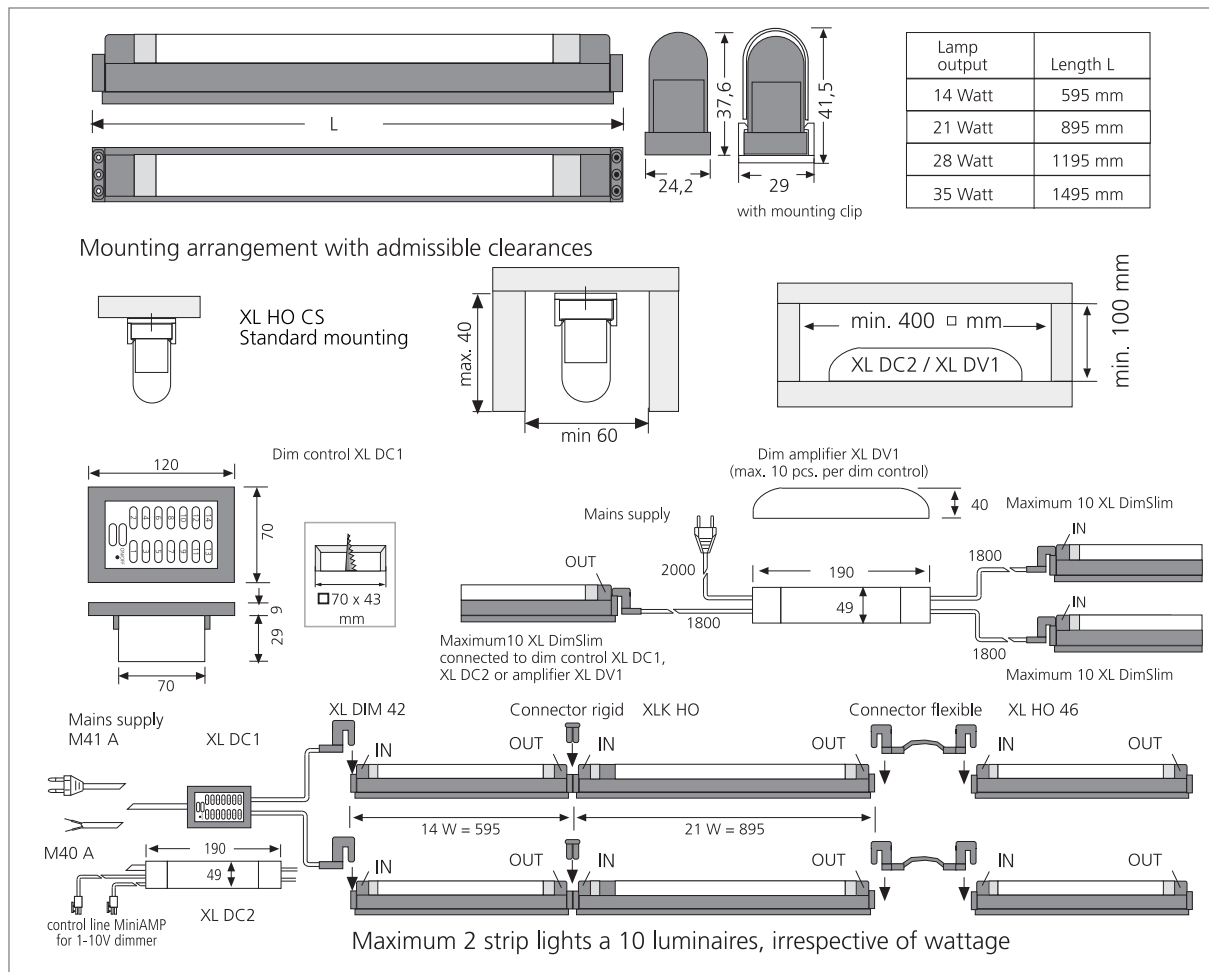


# SlimLite® XL Dim

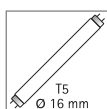
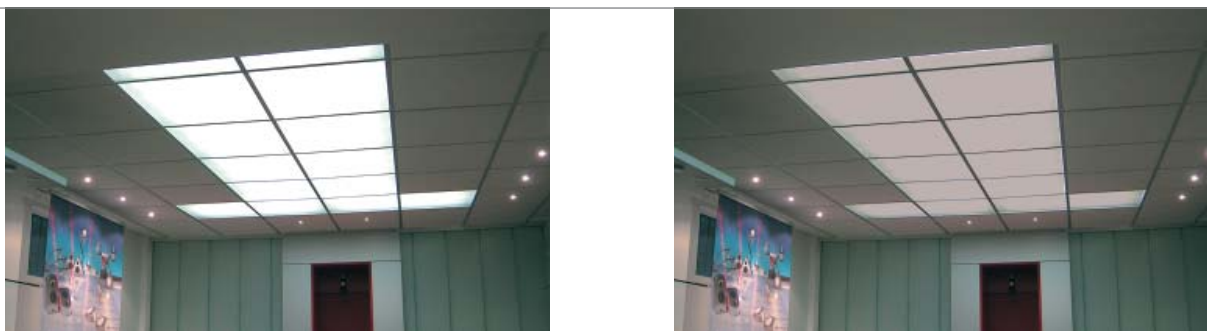


## Dimmable Linear Luminaire

- Application:** dimmable lighting system for exhibitions and shop-fittings
- Connection:** 220 – 240V / 50 – 60Hz
- Lamp:** extremely long-life T5 (ø 16mm) high efficiency fluorescent lamp, ø life 20,000 hours
- Energy efficiency:** very good, 86 – 94lm/W (14 – 35W)
- Colour rendering:** good, Ra = 80 – 89
- Special features:** electronic 14-stage dimmer or version for 1-10V; flicker-free instant start and power-saving with electronic ballast; rigid connectors for minimum spacing between luminaires; snap-in technology for easy mounting; with max. ten amplifiers for up to 220 luminaires; vertical plug-in system allows later removal from the strip light.



# SlimLite® XL Dim



SlimLite® XL Dim – the dimmable lighting system for effective use of long strip lights in tiny spaces, at exhibitions and in shop-fittings, e.g. shelving, counter tops and showcases. The electronic dimmer records the last setting entered before switching off, and reactivates the same setting when switched on again. Available in four lengths of 595, 895, 1195 and 1495 mm, with 14, 21, 28 and 35W.

Article No.	Description	Illustration	Features	Approx. weight	
202 210 401 00	DimSlim 595mm 14W		<ul style="list-style-type: none"> <li>• please order T5 lamps (from page 146) separately</li> <li>• aluminium casing</li> <li>• plexiglass cover see below</li> </ul>	340 g	
202 210 402 00	DimSlim 895mm 21W			470 g	
202 210 403 00	DimSlim 1195mm 28W			570 g	
202 210 404 00	DimSlim 1495mm 35W			660 g	
506 180 201 01	XL DC 1 dim control		<ul style="list-style-type: none"> <li>• with 14 dim steps</li> <li>• for max. 20 luminaires</li> </ul>	150 g	
215 040 903 01	M 40A/2000 mains cable 2m			<ul style="list-style-type: none"> <li>• with ferrules (country-specific plugs page 137)</li> </ul>	75 g
215 041 601 01	M 41A/2000 mains cable 2m			<ul style="list-style-type: none"> <li>• with Euro plug</li> </ul>	90 g
215 120 102 11	XL DIM 42/1800 connecting cable from dimmer to 1st luminaire		<ul style="list-style-type: none"> <li>• use 2 pieces with more than 10 luminaires</li> </ul>	130 g	
506 180 301 01	XL DC 2 dim control			<ul style="list-style-type: none"> <li>• for 1-10V dimmer (page 142)</li> <li>• for max. 20 luminaires</li> <li>• with Euro plug 2m + 2 control lines 2m + 2 connecting cables 1,8m</li> </ul>	390 g
506 190 101 01	XL DV 1 dim amplifier		<ul style="list-style-type: none"> <li>• for an additional 2x10 luminaires</li> <li>• with Euro plug 2m + 3 connecting cables 1,8m</li> </ul>	370 g	
215 120 400 06	XL HO 46/ 150 connecting cable 0.15m			50 g	
215 120 401 06	XL HO 46/ 300 connecting cable 0.3m			65 g	
215 120 402 06	XL HO 46/ 600 connecting cable 0.6m			80 g	
215 120 403 06	XL HO 46/1200 connecting cable 1.2m			120 g	
215 120 404 06	XL HO 46/1800 connecting cable 1.8m			160 g	
215 120 000 05	XLK HO connecting coupling			15 g	
203 011 502 01	XL-PLD / HO plexiglass cover 595mm			60 g	
203 011 502 02	XL-PLD / HO plexiglass cover 895mm			100 g	
203 011 502 03	XL-PLD / HO plexiglass cover 1195mm			140 g	
203 011 502 04	XL-PLD plexiglass cover 1495mm			180 g	