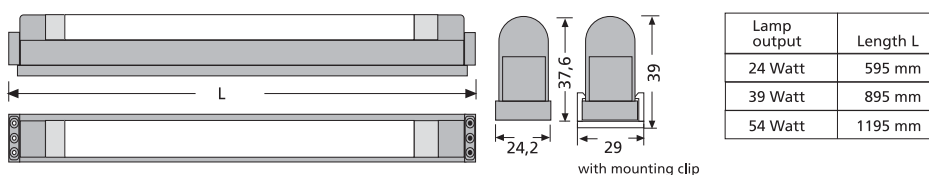


SlimLite® XL HO

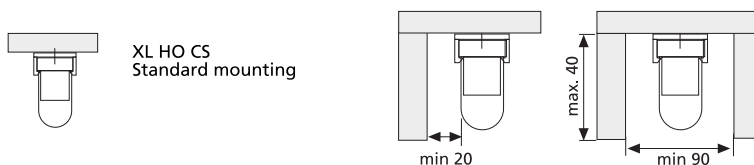


Luminaire with aluminium casing and High Output Lamp

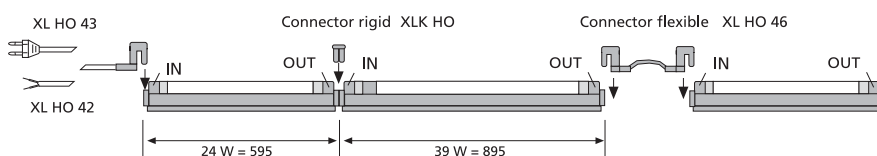
- Application:** for extra illumination of exhibition stands and shop-fittings
- Connection:** 220 – 240V / 50 – 60Hz
- Lamp:** extremely long-life T5 (ø 16mm) high output fluorescent lamp, ø life 24,000 hours
- Energy efficiency:** good – very good, 73 – 82lm/W (24 – 54W)
- Colour rendering:** good, Ra = 80 – 89
- Special features:** high output lamps with 50% higher luminous flux; flicker-free instant start and power-saving with electronic ballast; rigid connectors for minimum spacing between luminaires; snap-in technology for easy mounting; vertical plug-in system allows later removal from the strip light.



Mounting arrangement with admissible clearances

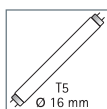
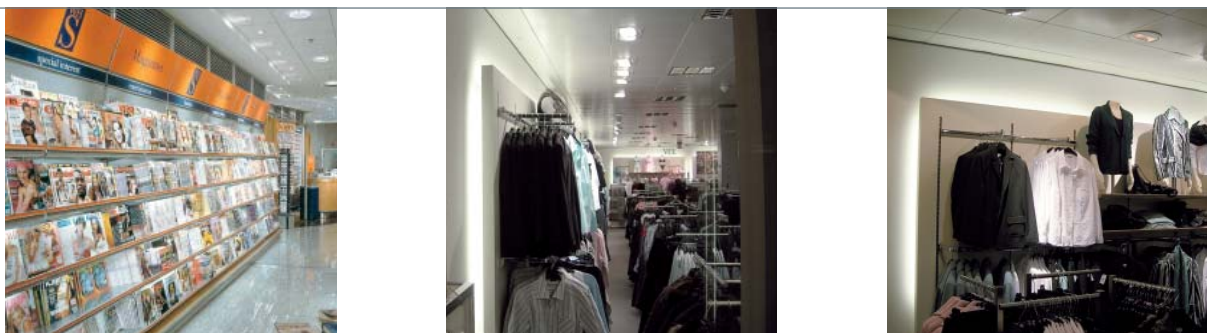


Mounting



Total lamp output in one strip light maximum 400 W

SlimLite® XL HO



SlimLite® XL HO – the lighting system for use anywhere needing a high light output in tight spaces, particularly at exhibitions and in shop-fittings. The high output lamps have 50% more luminous flux than conventional T5 lamps of the same length. Available in three lengths of 595, 895 and 1195 mm with 24, 39 and 54W.

Article No.	Description	Illustration	Features	Approx. weight
202 210 301 00	SlimLite XL HO 595mm 24W		<ul style="list-style-type: none"> • please order T5 HO lamp (page 157) separately • aluminium casing 	330 g
202 210 302 00	SlimLite XL HO 895mm 39W			450 g
202 210 303 00	SlimLite XL HO 1195mm 54W			530 g
215 120 102 10	XL HO 42/1800 mains cable with ferrules 1.8m		<ul style="list-style-type: none"> • country-specific plugs page 147 	130 g
215 120 200 10	XL HO 43/1800 mains cable with Euro plug 1.8m			150 g
215 120 400 06	XL HO 46/ 150 connecting cable 0.15m			50 g
215 120 401 06	XL HO 46/ 300 connecting cable 0.3m			65 g
215 120 402 06	XL HO 46/ 600 connecting cable 0.6m			80 g
215 120 403 06	XL HO 46/1200 connecting cable 1.2m			120 g
215 120 404 06	XL HO 46/1800 connecting cable 1.8m			160 g
215 120 000 05	XLK HO connecting coupling			15 g
203 011 502 01	XL-PLD / HO plexiglass cover 595mm			60 g
203 011 502 02	XL-PLD / HO plexiglass cover 895mm	100 g		
203 011 502 03	XL-PLD / HO plexiglass cover 1195mm	140 g		